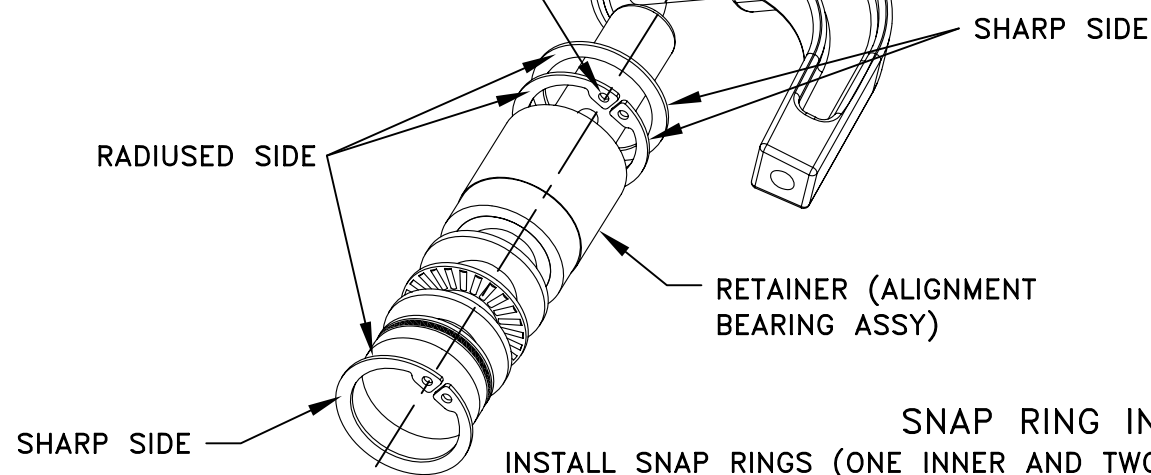


DIRECTION OF ROTATION

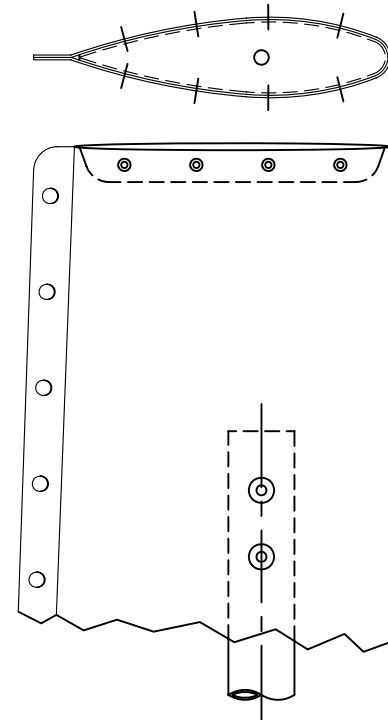
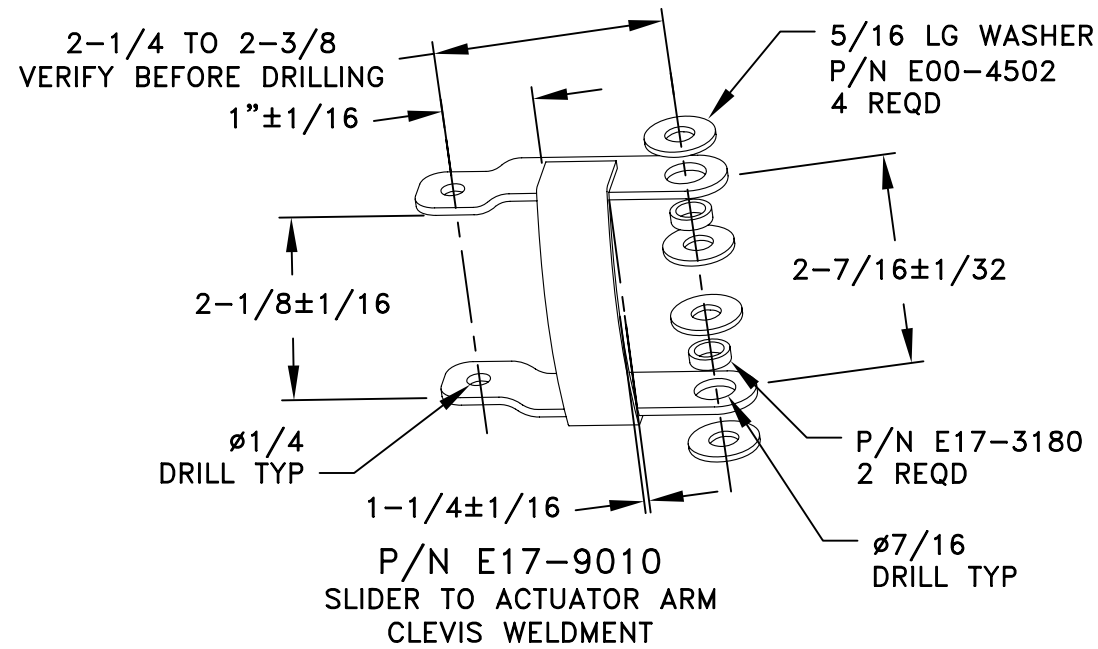
180° OPPOSITE PERPENDICULAR TO ROTATION



SNAP RING INSTALLATION

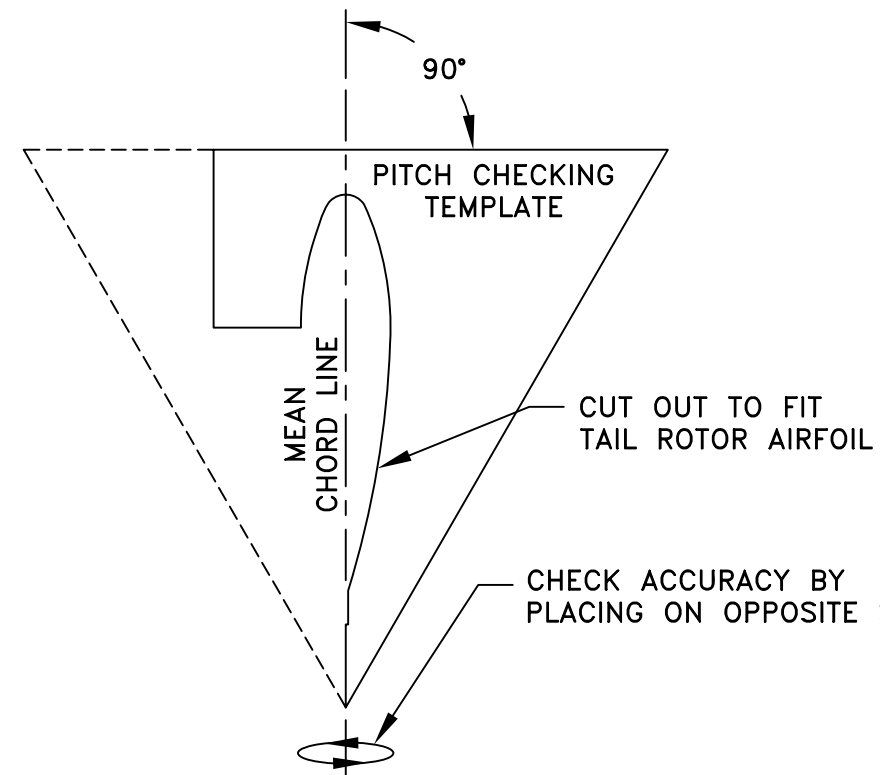
INSTALL SNAP RINGS (ONE INNER AND TWO OUTER) WITH RADIUS EDGES FACING TOWARDS THE RETAINER AND SHARP EDGES FACING OUTWARD. ORIENT SNAP RING ENDS 90 DEGREES FROM DIRECTION OF ROTATION AND 180 DEGREES FROM EACH OTHER. INSTALLATION AND REMOVAL OF SNAP RINGS MUST BE PERFORMED USING SUITABLE PLIERS. USE OF AND IMPROPER TOOL MAY CAUSE DAMAGE TO THE SNAP RINGS OR GROOVE, RESULTING IN LOSS OF ONE OR BOTH TAIL ROTOR BLADES. SUGGESTED PLIERS: MILBAR 4450, NEW BRITAIN P67, OR K-D 445.

NOTE: INSTALL TAIL ROTOR BARREL ONTO SHAFT BEFORE INSTALLING PITCH PINS.



TIP CAP INSTALLATION

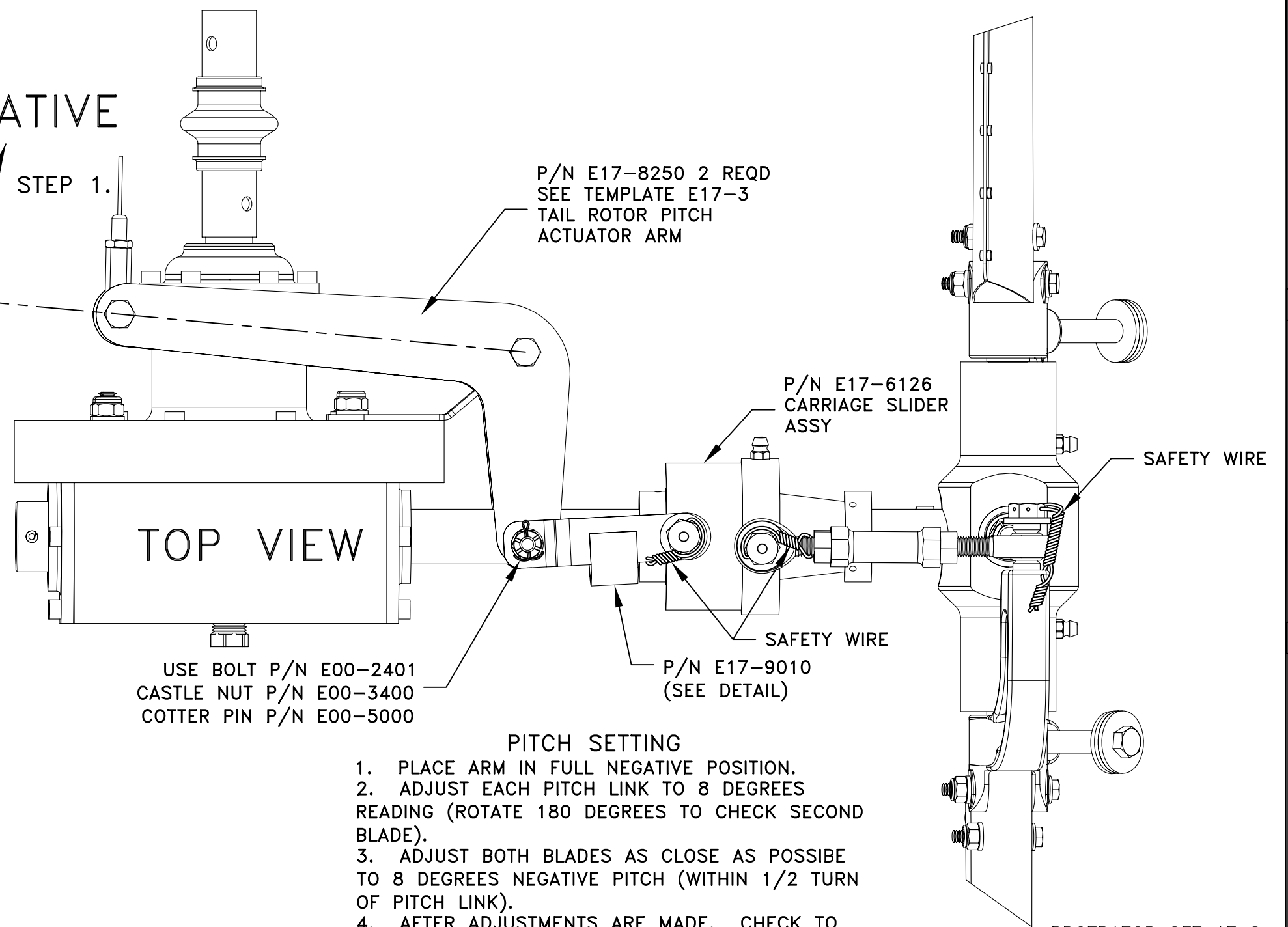
COMPLETE BALANCING OPERATION BEFORE FINAL TIP CAP INSTALLATION. USE (8) ALUMINUM COUNTERSUNK RIVETS (P/N E00-6200) PER TIP. SPACE AS SHOWN (EXACT LOCATION NOT CRITICAL).



PITCH CHECKING TEMPLATE MAKE FROM 1/2 TO 3/4 INCH THICK WOOD

NEGATIVE

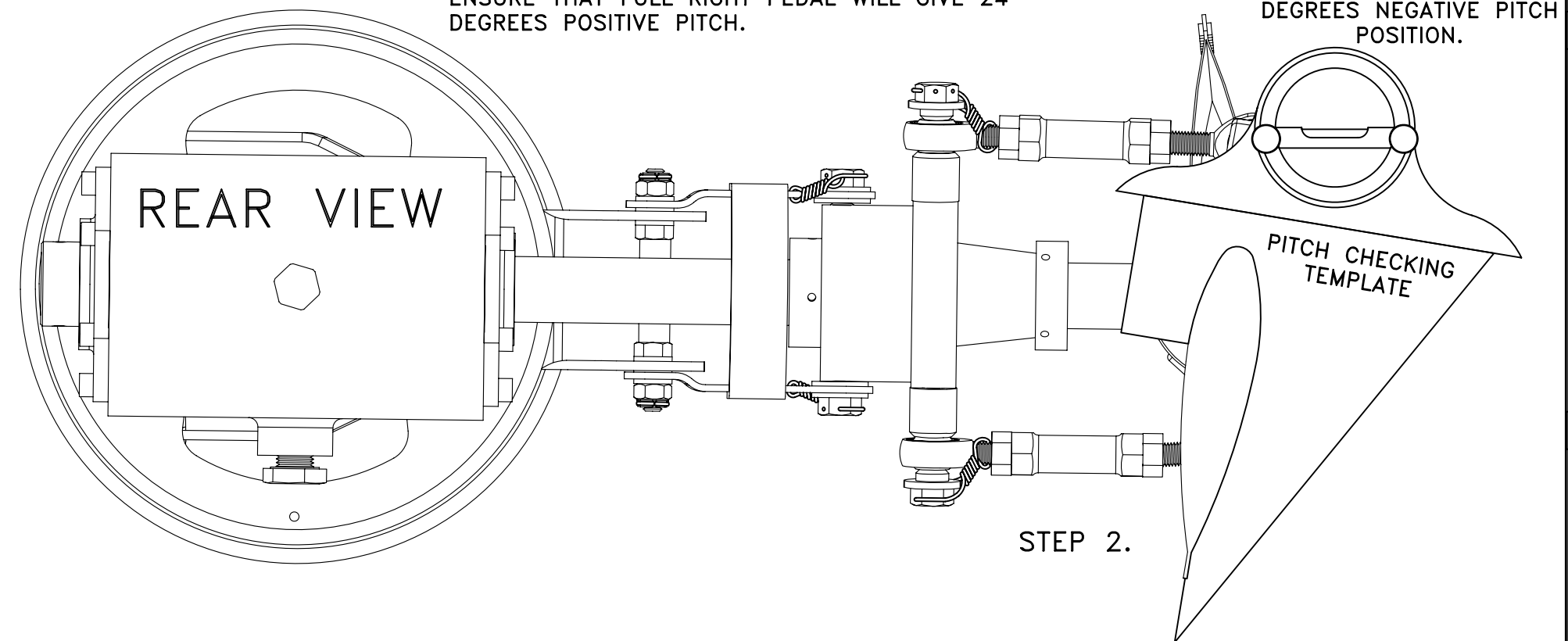
POSITIVE



PITCH SETTING

1. PLACE ARM IN FULL NEGATIVE POSITION.
2. ADJUST EACH PITCH LINK TO 8 DEGREES READING (ROTATE 180 DEGREES TO CHECK SECOND BLADE).
3. ADJUST BOTH BLADES AS CLOSE AS POSSIBLE TO 8 DEGREES NEGATIVE PITCH (WITHIN 1/2 TURN OF PITCH LINK).
4. AFTER ADJUSTMENTS ARE MADE. CHECK TO ENSURE THAT FULL RIGHT PEDAL WILL GIVE 24 DEGREES POSITIVE PITCH.

PROTRATOR SET AT 8 DEGREES NEGATIVE PITCH POSITION.



ROTORWAY INTERNATIONAL CHANDLER, ARIZONA			
SCALE: NONE	APPROVED BY:	DRAWN BY: RMR	
DATE: 2-19-08		REVISED: 5-17-08	
TAIL ROTOR DETAILS			
MODEL: A600 TALON	DRAWING NUMBER: E17-2001		